

Hamsterley 15 Nov 2017

Red 5.3 km 135 m

# Red

## LOW REDFORD & WINDY BANK

Scale 1:10000 Contours 5m

MN17



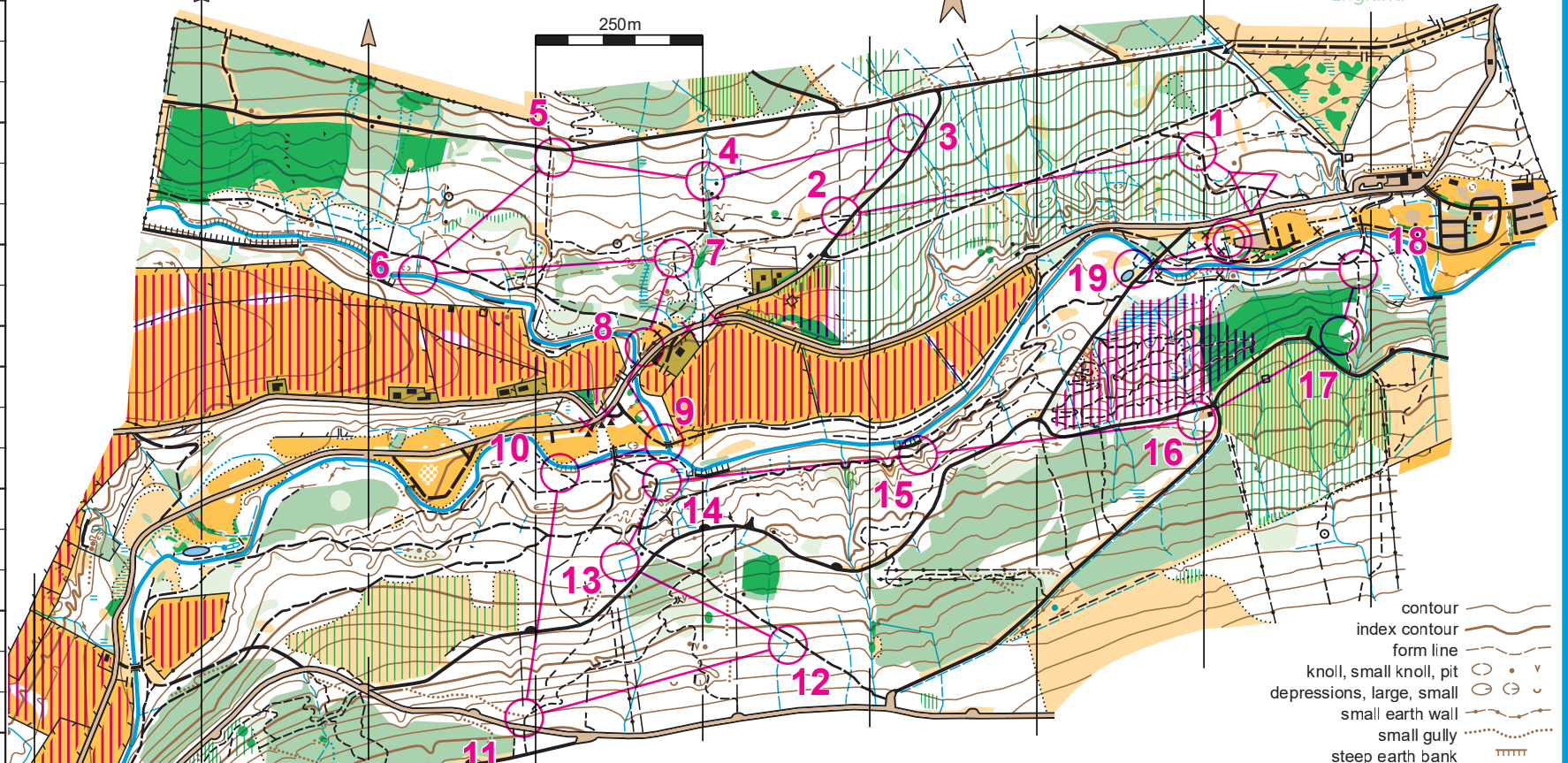
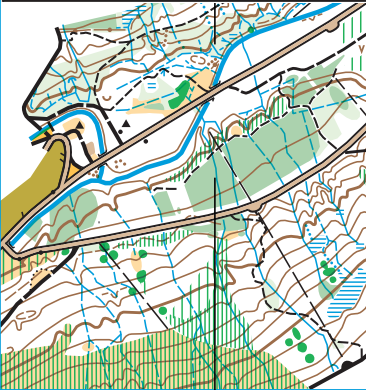
Forestry Commission  
England

Start: Path Junction
1 132 Path/Earth Wall crossing
2 158 Ride/Path Junction
3 167 Earth Wall, SE. End
4 152 Stream/Ditch Junction
5 164 Earth Wall, N. End
6 137 Stream Junction
7 151 Path/Earth Wall crossing
8 168 Clearing, SW. Part

### Take Care Crossing the Road

9 159 Bridge, NW. Side
10 160 Earth bank, Top
11 161 Gully/Path Junction
12 162 Ditch bend
13 142 Stream bend
14 163 Stream bend
15 170 Re-entrant, Lower Part
16 165 Stream
17 146 NW. Forest Corner, SW. Corner (inside)
18 166 Path bend
19 148 Pond, NE. Side

Navigate 150 m to Finish



Map location - NZ091312 (Visitor Centre)  
Based on Ordnance Survey mapping with the permission of the Controller of Her Majesty's Stationery Office.  
© Crown Copyright reserved. Licence No. 100015287  
British Orienteering event no. NN/2017/68625

Based on previous map by R McKenna (1994), with acknowledgement to older maps by members of NN and LO (MM, MS, DS)  
Survey and cartography by D Caudwell, 1999 / 2000, last updated by R McKenna 2017.  
Printed by NN using Ricoh SPC320DN colour laser  
© Northern Navigators 2017

Possession of this map gives no right of access for orienteering or any other purpose.  
Representation of a path or track does not indicate a right of way.  
Permission must be obtained from the landowner.

Symbols to ISOM2000

**OUT OF BOUNDS** [Pink vertical lines symbol]

minor road	[Double line symbol]	contour	[Wavy line symbol]
forest road	[Thick line symbol]	index contour	[Dashed wavy line symbol]
vehicle track	[Thick dashed line symbol]	form line	[Thin wavy line symbol]
path	[Dashed line symbol]	knoll, small knoll, pit	[Circle with dot symbol]
small path	[Thin dashed line symbol]	depressions, large, small	[Circle with cross symbol]
path, difficult to follow	[Dotted line symbol]	small earth wall	[Dashed line with dots symbol]
narrow ride	[Thin solid line symbol]	small gully	[Dotted line with dots symbol]
high wall	[Line with cross symbol]	steep earth bank	[Line with triangles symbol]
wall, ruined wall	[Line with cross symbol]	dangerous crags	[Line with triangles symbol]
fence, ruined fence	[Line with cross symbol]	passable crags	[Line with triangles symbol]
crossing points	[Line with cross symbol]	boulder group, boulder field	[Line with triangles symbol]
building, small building	[Square symbol]	stream, crossable	[Line with triangles symbol]
ruin, small ruin	[Square symbol]	small stream	[Line with triangles symbol]
cairn, boulder, sculpture	[Circle with dot symbol]	ditch, narrow marsh	[Line with triangles symbol]
		marsh, pond	[Line with triangles symbol]
		well, source	[Line with triangles symbol]
		open land	[Line with triangles symbol]
		rough open land	[Line with triangles symbol]
		forest, run	[Line with triangles symbol]
		forest, slow run	[Line with triangles symbol]
		forest, walk	[Line with triangles symbol]
		forest, fight	[Line with triangles symbol]
		undergrowth, slow run	[Line with triangles symbol]
		undergrowth, difficult to run	[Line with triangles symbol]
		veg boundary, distinct	[Line with triangles symbol]
		veg boundary, indistinct	[Line with triangles symbol]
		hard standing	[Line with triangles symbol]
		settlement (OOB)	[Line with triangles symbol]